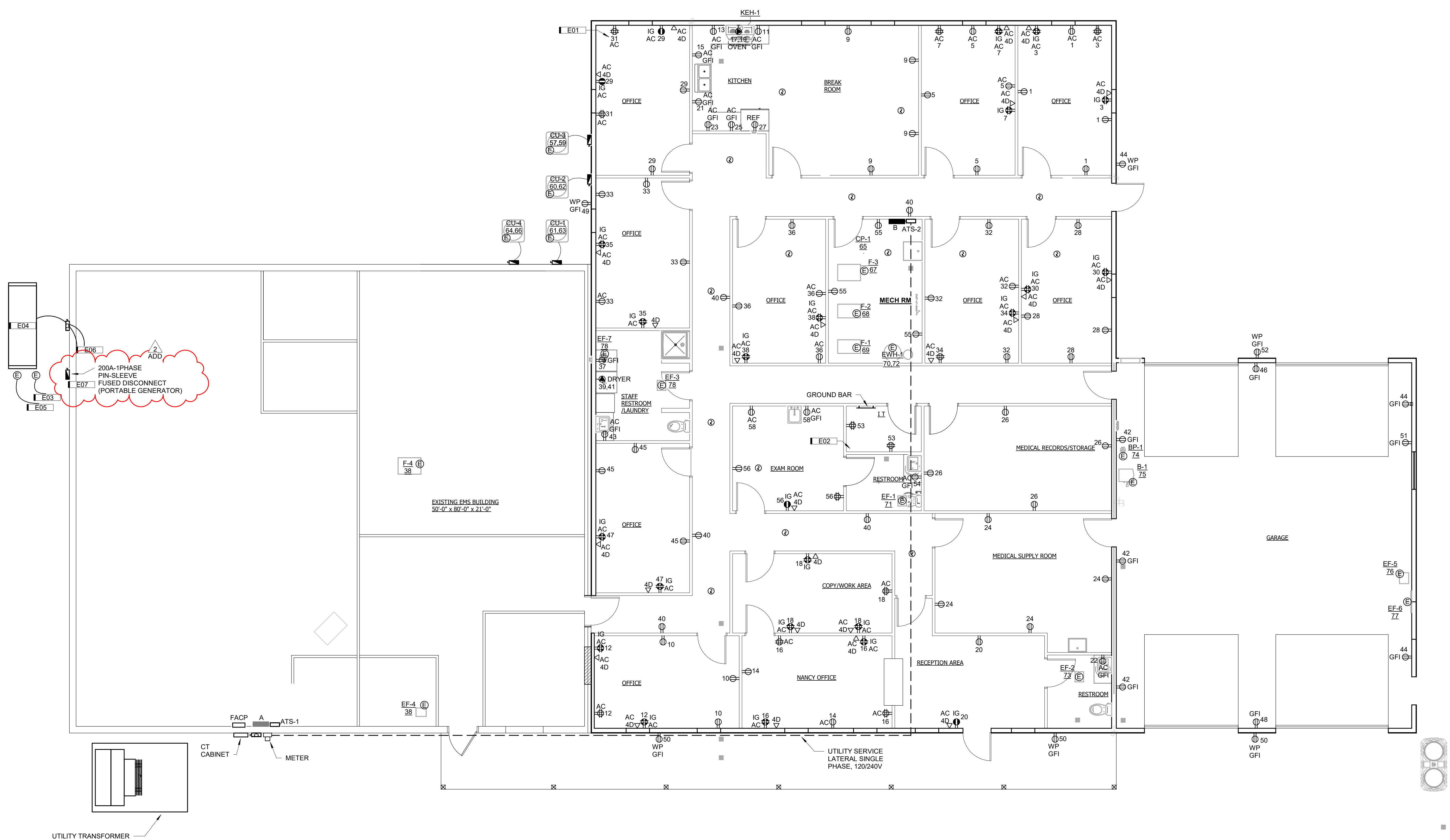
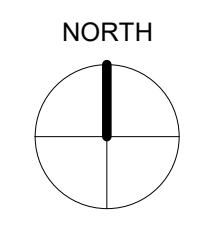


KEYNOTES	
KEY	NOTE
E01	CIRCUITS ADDED TO NEW ADDITION SHALL BE ROUTED TO PANEL LV3, WITH CIRCUIT NUMBER INDICATED BELOW ID.
E02	ROUTE INCOMING CONDUIT IS TO BE ROUTED TO SOUTHWEST CORNER OF IT ROOM.
E03	GENERATOR BATTERY CHARGER (2) #12, (1) #12GND, 3/4" CONDUIT
E04	60KW DIESEL GENERATOR, OUTDOOR RATED, WEATHERPROOF AND SOUND ATTENUATED ENCLOSURE.
E05	PROVIDE 2" CONDUIT AND CONTROLS FOR WIRING FROM GENERATOR TO ATS (2)
E06	NEW GENERATOR-REFER TO E500 FOR ADDITIONAL DETAILS.
E07	FURNISH AND INSTALL 2#2/0, 1#6, 1-1/2" C BETWEEN PORTABLE GENERATOR CONNECTION AND 200A 2P CIRCUIT BREAKER WITHIN NEW PANEL MDP.

SHIVE-HATTERY
ARCHITECTURE+ENGINEERING
222 THIRD AVENUE SE, SUITE 300
CEDAR RAPIDS, IA 52401
319.364.0227 | SHIVE-HATTERY.COM



A6 FIRST FLOOR POWER & SYSTEMS PLAN
3/16" = 1'-0" 0" 8"



BUTLER COUNTY PUBLIC HEALTH ADDITION
610 Oak Street, Allison, IA 50602

DRWN BY	BKK	ADD 2	08/29/20	ADD #02
APPROVED BY	MMG			22
ISSUED FOR	BID			
ISSUE DATE			08/15/2022	
PROJECT NUMBER			2112202420	
FIELD BOOK				

FIRST FLOOR POWER & SYSTEMS PLAN

E201

Autodesk Docs: 0712202402/Butler Co Public Health/21122024/MEP/E201.rvt
08/29/2022 11:34:18 AM
Autodesk Revit 2021